

For Research Use Only

RNASEH2A Polyclonal antibody

Catalog Number: 16132-1-AP

Featured Product

8 Publications



Basic Information

Catalog Number: 16132-1-AP	GenBank Accession Number: BC011748	Purification Method: Antigen affinity purification
Size: 150ul , Concentration: 350 µg/ml by Nanodrop;	GeneID (NCBI): 10535	Recommended Dilutions: WB 1:2000-1:10000
Source: Rabbit	UNIPROT ID: O75792	
Isotype: IgG	Full Name: ribonuclease H2, subunit A	
Immunogen Catalog Number: AG9118	Calculated MW: 299 aa, 33 kDa	
	Observed MW: 33 kDa	

Applications

Tested Applications: WB, ELISA	Positive Controls: WB : HeLa cells, human liver tissue, MCF-7 cells
Cited Applications: WB, IHC	
Species Specificity: human	
Cited Species: human, mouse	

Background Information

RNASEH2A(Ribonuclease H2 subunit A) is also named as RNASEHI, RNHIA and belongs to the RNase HII family and Eukaryotic subfamily. It is involved in the removal of the initiator RNA primers of Okazaki fragments, an essential step during chromosomal DNA replication of the lagging strand(PMID:9482870). It is an endonuclease that specifically degrades the RNA of RNA:DNA hybrids. Defects in RNASEH2A are the cause of Aicardi-Goutieres syndrome type 4 (AGS4).

Notable Publications

Author	Pubmed ID	Journal	Application
Sarah K Deasy	31125342	PLoS Genet	WB
Bin Dai	27176716	Oncol Rep	
Fengbo Zhao	34165025	Tumori	IHC

Storage

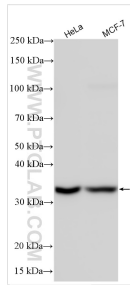
Storage:
Store at -20°C. Stable for one year after shipment.
Storage Buffer:
PBS with 0.02% sodium azide and 50% glycerol pH 7.3.
Aliquoting is unnecessary for -20°C storage

*** 20ul sizes contain 0.1% BSA

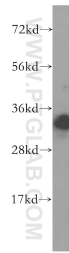
For technical support and original validation data for this product please contact:
T: 1 (888) 4PTGLAB (1-888-478-4522) (toll free in USA), or 1(312) 455-8498 (outside USA)
E: proteintech@ptglab.com
W: ptglab.com

This product is exclusively available under Proteintech Group brand and is not available to purchase from any other manufacturer.

Selected Validation Data



Various lysates were subjected to SDS PAGE followed by western blot with 16132-1-AP (RNASEH2A antibody) at dilution of 1:5000 incubated at room temperature for 1.5 hours.



human liver tissue were subjected to SDS PAGE followed by western blot with 16132-1-AP (RNASEH2A antibody) at dilution of 1:500 incubated at room temperature for 1.5 hours.