

For Research Use Only

NAPG Polyclonal antibody

Catalog Number: 15604-1-AP



Basic Information

Catalog Number:
15604-1-AP

Size:
150ul , Concentration: 400 µg/ml by Nanodrop and 200 µg/ml by Bradford method using BSA as the standard;

Source:
Rabbit

Isotype:
IgG

Immunogen Catalog Number:
AG7988

GenBank Accession Number:
BC001889

GeneID (NCBI):
8774

Full Name:
N-ethylmaleimide-sensitive factor attachment protein, gamma

Calculated MW:
35 kDa

Observed MW:
35 kDa

Purification Method:
Antigen affinity purification

Recommended Dilutions:
WB 1:500-1:2000
IP 0.5-4.0 ug for IP and 1:200-1:1000 for WB

Applications

Tested Applications:
IP, WB, ELISA

Species Specificity:
human, mouse, rat

Positive Controls:

WB : A375 cells, K-562 cells, HepG2 cells, HeLa cells, Jurkat cells

IP : HepG2 cells,

Background Information

Storage

Storage:

Store at -20°C. Stable for one year after shipment.

Storage Buffer:

PBS with 0.02% sodium azide and 50% glycerol pH 7.3.

Aliquoting is unnecessary for -20°C storage

***** 20ul sizes contain 0.1% BSA**

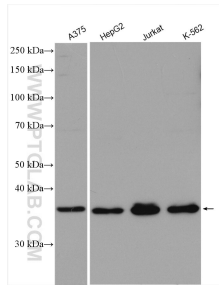
For technical support and original validation data for this product please contact:

T: 1 (888) 4PTGLAB (1-888-478-4522) (toll free in USA), or 1(312) 455-8498 (outside USA)

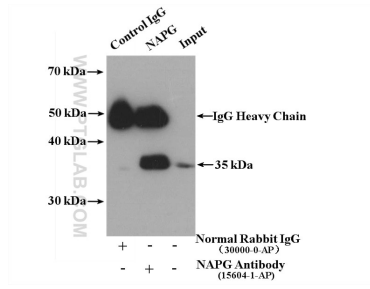
E: proteintech@ptglab.com
W: ptglab.com

This product is exclusively available under Proteintech Group brand and is not available to purchase from any other manufacturer.

Selected Validation Data



Various lysates were subjected to SDS PAGE followed by western blot with 15604-1-AP (NAPG antibody) at dilution of 1:1000 incubated at room temperature for 1.5 hours.



IP result of anti-NAPG (IP:15604-1-AP, 4ug; Detection:15604-1-AP 1:400) with HepG2 cells lysate 3300 ug.