

For Research Use Only

CBX2 Polyclonal antibody

Catalog Number:15579-1-AP

Featured Product

7 Publications



Basic Information

Catalog Number:

15579-1-AP

Size:

150ul , Concentration: 650 ug/ml by Nanodrop;

Source:

Rabbit

Isotype:

IgG

Immunogen Catalog Number:

AG7979

GenBank Accession Number:

BC004252

GeneID (NCBI):

84733

UNIPROT ID:

Q14781

Full Name:

chromobox homolog 2 (Pc class homolog, Drosophila)

Calculated MW:

56 kDa

Observed MW:

65-70 kDa

Purification Method:

Antigen affinity purification

Recommended Dilutions:

WB 1:1000-1:8000

Applications

Tested Applications:

WB, ELISA

Cited Applications:

WB, IF, IHC

Species Specificity:

Human, Mouse, Rat

Cited Species:

human, mouse

Positive Controls:

WB : HEK-293 cells, mouse heart tissue, HeLa cells, MCF-7 cells, rat heart tissue

Background Information

The chromobox homologue protein 2 (CBX2) is a critical component of the PRC1 complex involved in antiviral innate immunity, neuronal, and gonadal differentiation, axial patterning during embryonic development, cell proliferation, and senescence (PMID: 32870972). CBX2 has 2 isoforms with the molecular mass of 23 and 56 kDa. Sometimes higher molecular weight around 65-70 kDa can also be observed, which may be a modified variant of CBX2.

Notable Publications

Author	Pubmed ID	Journal	Application
Xun Huang	30220457	Cell	WB
Shipeng Zheng	30972192	Am J Transl Res	WB,IHC
Rui Sun	38495501	J Cancer	WB,IHC

Storage

Storage:

Store at -20°C. Stable for one year after shipment.

Storage Buffer:

PBS with 0.02% sodium azide and 50% glycerol pH 7.3.

Aliquoting is unnecessary for -20°C storage

*** 20ul sizes contain 0.1% BSA

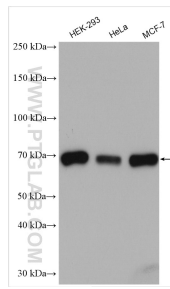
For technical support and original validation data for this product please contact:

T: 1 (888) 4PTGLAB (1-888-478-4522) (toll free in USA), or 1(312) 455-8498 (outside USA)

E: proteintech@ptglab.com
W: ptglab.com

This product is exclusively available under Proteintech Group brand and is not available to purchase from any other manufacturer.

Selected Validation Data



Various lysates were subjected to SDS PAGE followed by western blot with 15579-1-AP (CBX2 antibody) at dilution of 1:4000 incubated at room temperature for 1.5 hours.