

For Research Use Only

# HACL1 Polyclonal antibody

Catalog Number: 15519-1-AP

Featured Product



## Basic Information

**Catalog Number:**

15519-1-AP

**Size:**

150ul, Concentration: 450 ug/ml by Nanodrop and 327 ug/ml by Bradford method using BSA as the standard;

**Source:**

Rabbit

**Isotype:**

IgG

**Immunogen Catalog Number:**

AG7830

**GenBank Accession Number:**

BC001627

**GeneID (NCBI):**

26061

**UNIPROT ID:**

Q9UJ83

**Full Name:**

2-hydroxyacyl-CoA lyase 1

**Calculated MW:**

64 kDa

**Observed MW:**

64 kDa

**Purification Method:**

Antigen affinity purification

**Recommended Dilutions:**

WB 1:500-1:3000

IP 0.5-4.0 ug for 1.0-3.0 mg of total protein lysate

IHC 1:50-1:500

IF/ICC 1:50-1:500

## Applications

**Tested Applications:**

WB, IHC, IF/ICC, IP, ELISA

**Species Specificity:**

human, mouse, rat

**Note-IHC: suggested antigen retrieval with TE buffer pH 9.0; (\*) Alternatively, antigen retrieval may be performed with citrate buffer pH 6.0**

**Positive Controls:**

WB : HeLa cells, HEK-293 cells

IP : HeLa cells,

IHC : rat liver tissue, human liver tissue, rat kidney tissue

IF/ICC : HeLa cells,

## Storage

**Storage:**

Store at -20°C. Stable for one year after shipment.

**Storage Buffer:**

PBS with 0.02% sodium azide and 50% glycerol pH 7.3.

Aliquoting is unnecessary for -20°C storage

\*\*\* 20ul sizes contain 0.1% BSA

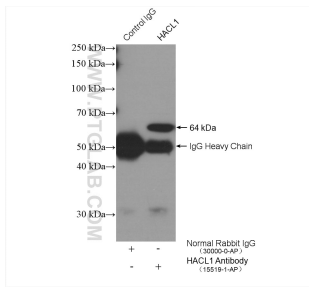
For technical support and original validation data for this product please contact:

T: 1 (888) 4PTGLAB (1-888-478-4522) (toll free in USA), or 1(312) 455-8498 (outside USA)

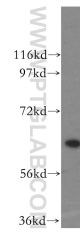
E: proteintech@ptglab.com  
W: ptglab.com

This product is exclusively available under Proteintech Group brand and is not available to purchase from any other manufacturer.

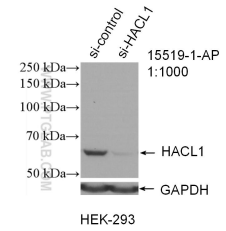
## Selected Validation Data



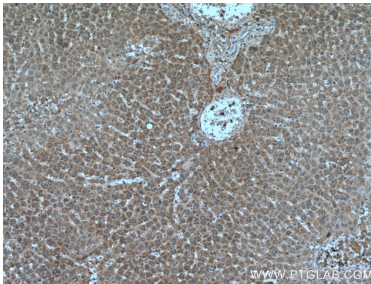
IP result of anti-HACL1 (IP:15519-1-AP, 4 $\mu$ g; Detection:15519-1-AP 1:300) with HeLa cells lysate 2640  $\mu$ g.



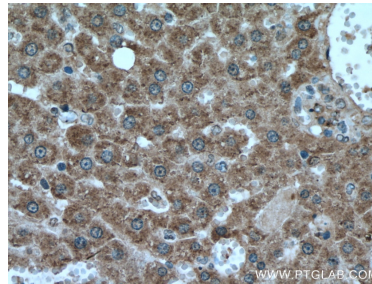
HeLa cells were subjected to SDS PAGE followed by western blot with 15519-1-AP (HACL1 antibody) at dilution of 1:500 incubated at room temperature for 1.5 hours.



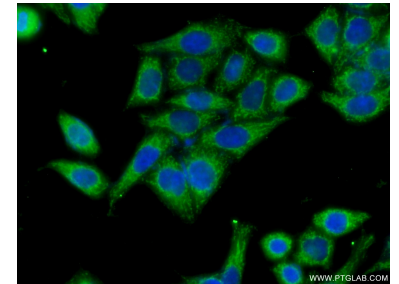
WB result of HACL1 antibody (15519-1-AP; 1:1000; incubated at room temperature for 1.5 hours) with sh-Control and sh-HACL1 transfected HEK-293 cells.



Immunohistochemical analysis of paraffin-embedded rat liver tissue slide using 15519-1-AP (HACL1 antibody) at dilution of 1:200 (under 10x lens). Heat mediated antigen retrieval with Tris-EDTA buffer (pH 9.0).



Immunohistochemical analysis of paraffin-embedded rat liver tissue slide using 15519-1-AP (HACL1 antibody) at dilution of 1:200 (under 40x lens). Heat mediated antigen retrieval with Tris-EDTA buffer (pH 9.0).



Immunofluorescent analysis of (-20°C Ethanol) fixed HeLa cells using 15519-1-AP (HACL1 antibody) at dilution of 1:50 and Alexa Fluor 488-conjugated Goat Anti-Rabbit IgG(H+L).