

For Research Use Only

ATP6AP1 Polyclonal antibody

Catalog Number: 15305-1-AP **3 Publications**



Basic Information

Catalog Number: 15305-1-AP	GenBank Accession Number: BC000724	Purification Method: Antigen affinity purification
Size: 150ul, Concentration: 240 µg/ml by Nanodrop and 133 µg/ml by Bradford method using BSA as the standard;	GeneID (NCBI): 537	Recommended Dilutions: WB 1:500-1:2000 IHC 1:20-1:200
Source: Rabbit	UNIPROT ID: Q15904	
Isotype: IgG	Full Name: ATPase, H ⁺ transporting, lysosomal accessory protein 1	
Immunogen Catalog Number: AG7859	Calculated MW: 52 kDa	
	Observed MW: 46-52 kDa, 61-64 kDa	

Applications

Tested Applications: WB, IHC, ELISA	Positive Controls: WB: mouse kidney tissue, HeLa cells, HepG2 cells IHC: human kidney tissue,
Cited Applications: WB, IF, IHC	
Species Specificity: human, mouse, rat	
Cited Species: human	

Note-IHC: suggested antigen retrieval with TE buffer pH 9.0; (*) Alternatively, antigen retrieval may be performed with citrate buffer pH 6.0

Notable Publications

Author	Pubmed ID	Journal	Application
Ang Luo	35893764	Proteomes	WB
Enrica Balza	28700346	Oncotarget	IF
Shijie Zhang	38369634	Sci Rep	IHC

Storage

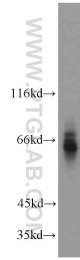
Storage:
Store at -20°C. Stable for one year after shipment.
Storage Buffer:
PBS with 0.02% sodium azide and 50% glycerol pH 7.3.
Aliquoting is unnecessary for -20°C storage

*** 20ul sizes contain 0.1% BSA

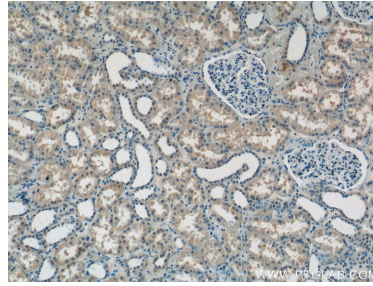
For technical support and original validation data for this product please contact:
T: 1 (888) 4PTGLAB (1-888-478-4522) (toll free in USA), or 1(312) 455-8498 (outside USA)
E: proteintech@ptglab.com
W: ptglab.com

This product is exclusively available under Proteintech Group brand and is not available to purchase from any other manufacturer.

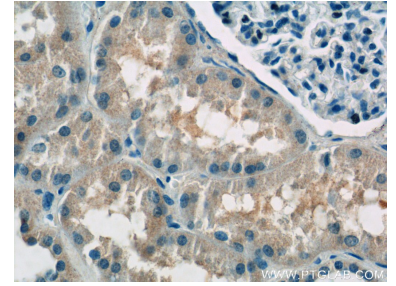
Selected Validation Data



mouse kidney tissue were subjected to SDS PAGE followed by western blot with 15305-1-AP (ATP6AP1 antibody) at dilution of 1:300 incubated at room temperature for 1.5 hours.



Immunohistochemical analysis of paraffin-embedded human kidney tissue slide using 15305-1-AP (ATP6AP1 Antibody) at dilution of 1:50 (under 10x lens).



Immunohistochemical analysis of paraffin-embedded human kidney tissue slide using 15305-1-AP (ATP6AP1 Antibody) at dilution of 1:50 (under 40x lens).