

For Research Use Only

NDUFA7 Polyclonal antibody

Catalog Number: 15300-1-AP **2 Publications**



Basic Information

Catalog Number: 15300-1-AP	GenBank Accession Number: BC003102	Purification Method: Antigen affinity purification
Size: 150ul , Concentration: 133 µg/ml by Nanodrop and 133 µg/ml by Bradford method using BSA as the standard;	GeneID (NCBI): 4701	Recommended Dilutions: WB 1:200-1:1000
Source: Rabbit	Full Name: NADH dehydrogenase (ubiquinone) 1 alpha subcomplex, 7, 14.5kDa	
Isotype: IgG	Calculated MW: 13 kDa	
Immunogen Catalog Number: AG7558	Observed MW: 13 kDa	

Applications

Tested Applications: WB, ELISA	Positive Controls: WB : mouse heart tissue,
Cited Applications: WB	
Species Specificity: human, mouse, rat	
Cited Species: human	

Background Information

NDUFA7(NADH dehydrogenase [ubiquinone] 1 alpha subcomplex subunit 7) is an accessory subunit of the mitochondrial membrane respiratory chain NADH dehydrogenase (Complex I), that is believed not to be involved in catalysis. Complex I functions in the transfer of electrons from NADH to the respiratory chain. The immediate electron acceptor for the enzyme is believed to be ubiquinone.

Notable Publications

Author	Pubmed ID	Journal	Application
Xiaojian Shi	35513392	Nat Commun	WB
Paula Garcia-Esparcia	27984680	Brain Pathol	WB

Storage

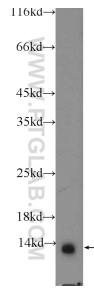
Storage:
Store at -20°C. Stable for one year after shipment.
Storage Buffer:
PBS with 0.02% sodium azide and 50% glycerol pH 7.3.
Aliquoting is unnecessary for -20°C storage

*** 20ul sizes contain 0.1% BSA

For technical support and original validation data for this product please contact:
T: 1 (888) 4PTGLAB (1-888-478-4522) (toll free in USA), or 1(312) 455-8498 (outside USA)
E: proteintech@ptglab.com
W: ptglab.com

This product is exclusively available under Proteintech Group brand and is not available to purchase from any other manufacturer.

Selected Validation Data



mouse heart tissue were subjected to SDS PAGE followed by western blot with 15300-1-AP (NDUFA7 Antibody) at dilution of 1:300 incubated at room temperature for 1.5 hours.