

For Research Use Only

# Retrolinkin Polyclonal antibody

Catalog Number:15177-1-AP



## Basic Information

<b>Catalog Number:</b> 15177-1-AP	<b>GenBank Accession Number:</b> BC000568	<b>Purification Method:</b> Antigen affinity purification
<b>Size:</b> 150ul , Concentration: 500 ug/ml by Nanodrop;	<b>GeneID (NCBI):</b> 66000	<b>Recommended Dilutions:</b> WB 1:500-1:2000
<b>Source:</b> Rabbit	<b>UNIPROT ID:</b> Q6UXF1	
<b>Isotype:</b> IgG	<b>Full Name:</b> transmembrane protein 108	
<b>Immunogen Catalog Number:</b> AG7076	<b>Calculated MW:</b> 60 kDa	
	<b>Observed MW:</b> 55-60 kDa and 65-70 kDa	

## Applications

<b>Tested Applications:</b> WB, ELISA	<b>Positive Controls:</b> WB : HeLa cells, Jurkat cells
<b>Species Specificity:</b> human	

## Background Information

Retrolinkin, also named as TMEM108, KIAA1690 and RTLN, is a membrane protein which plays an important role in retrograde axonal transport. It's highly enriched in neuronal endosomes, binds directly to BPAG1n4. This gene has two isoforms with calculated MW 60 kDa and 50 kDa. With modification, the MW of these two forms will be migrated to 65-70 kDa and 55-60 kDa.

## Storage

**Storage:**  
Store at -20°C. Stable for one year after shipment.  
**Storage Buffer:**  
PBS with 0.02% sodium azide and 50% glycerol pH 7.3.  
Aliquoting is unnecessary for -20°C storage

\*\*\* 20ul sizes contain 0.1% BSA

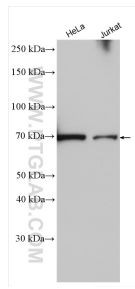
For technical support and original validation data for this product please contact:

T: 1 (888) 4PTGLAB (1-888-478-4522) (toll free in USA), or 1(312) 455-8498 (outside USA)

E: [proteintech@ptglab.com](mailto:proteintech@ptglab.com)  
W: [ptglab.com](http://ptglab.com)

This product is exclusively available under Proteintech Group brand and is not available to purchase from any other manufacturer.

## Selected Validation Data



Various lysates were subjected to SDS PAGE followed by western blot with 15177-1-AP (Retrolinkin antibody) at dilution of 1:1000 incubated at room temperature for 1.5 hours.