

For Research Use Only

# SMOX Polyclonal antibody

Catalog Number:15052-1-AP

Featured Product

31 Publications



## Basic Information

**Catalog Number:**

15052-1-AP

**Size:**

150ul , Concentration: 300 ug/ml by Nanodrop;

**Source:**

Rabbit

**Isotype:**

IgG

**Immunogen Catalog Number:**

AG7035

**GenBank Accession Number:**

BC000669

**GeneID (NCBI):**

54498

**UNIPROT ID:**

Q9NWM0

**Full Name:**

spermine oxidase

**Calculated MW:**

62 kDa

**Observed MW:**

56-65 kDa

**Purification Method:**

Antigen affinity purification

**Recommended Dilutions:**

WB 1:2000-1:10000

IHC 1:50-1:500

## Applications

**Tested Applications:**

WB, IHC, ELISA

**Cited Applications:**

WB, IHC, IF

**Species Specificity:**

human, mouse, rat

**Cited Species:**

human, mouse, rat

**Positive Controls:**

**WB :** A549 cells, PC-13 cells, MCF-7 cells, HeLa cells, PC-3 cells

**IHC :** human prostate cancer tissue, human stomach cancer tissue, human gliomas tissue

**Note-IHC: suggested antigen retrieval with TE buffer pH 9.0; (\*) Alternatively, antigen retrieval may be performed with citrate buffer pH 6.0**

## Background Information

SMOX(Spermine oxidase) is also named as SMO, PAO-1 and PAOh1. It belongs to the class of polyamine oxidases (PAOs).The flavoprotein SMO, which specifically oxidizes Spm, is one of the key regulatory enzymes involved in polyamine homeostasis in animal cells (PMID:14764092). It has 6 isoforms produced by alternative splicing with the MW of 61 kDa, 56 kDa, 21 kDa, 60 kDa, 43 kDa and 65 kDa, respectively.

## Notable Publications

Author	Pubmed ID	Journal	Application
Takeshi Uemura	32995657	Heliyon	WB
Anna Bianchi-Smiraglia	30198908	J Clin Invest	WB
Bin Xiang	36353478	Front Pharmacol	IHC

## Storage

**Storage:**

Store at -20°C. Stable for one year after shipment.

**Storage Buffer:**

PBS with 0.02% sodium azide and 50% glycerol pH 7.3.

Aliquoting is unnecessary for -20°C storage

\*\*\* 20ul sizes contain 0.1% BSA

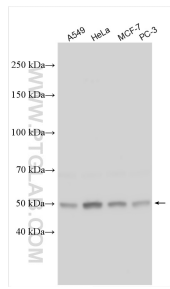
For technical support and original validation data for this product please contact:

T: 1 (888) 4PTGLAB (1-888-478-4522) (toll free in USA), or 1(312) 455-8498 (outside USA)

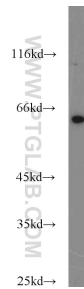
E: proteintech@ptglab.com  
W: ptglab.com

This product is exclusively available under Proteintech Group brand and is not available to purchase from any other manufacturer.

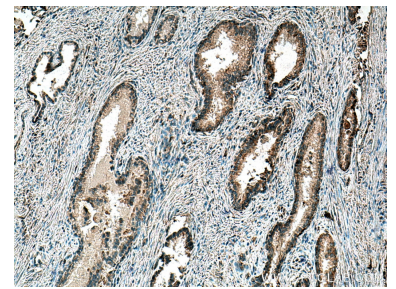
## Selected Validation Data



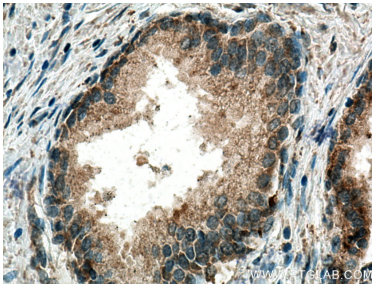
Various lysates were subjected to SDS PAGE followed by western blot with 15052-1-AP (SMOX antibody) at dilution of 1:5000 incubated at room temperature for 1.5 hours.



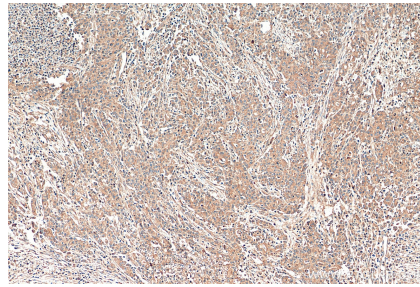
PC-13 cells were subjected to SDS PAGE followed by western blot with 15052-1-AP (SMOX antibody) at dilution of 1:500 incubated at room temperature for 1.5 hours.



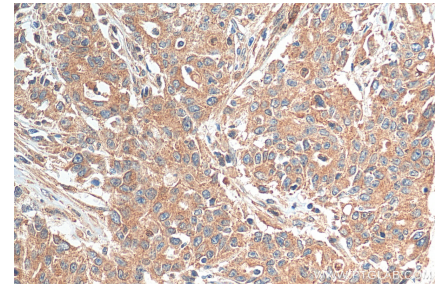
Immunohistochemical analysis of paraffin-embedded human prostate cancer tissue slide using 15052-1-AP (SMOX antibody) at dilution of 1:200 (under 10x lens). Heat mediated antigen retrieval with Tris-EDTA buffer (pH 9.0).



Immunohistochemical analysis of paraffin-embedded human prostate cancer tissue slide using 15052-1-AP (SMOX antibody) at dilution of 1:200 (under 40x lens). Heat mediated antigen retrieval with Tris-EDTA buffer (pH 9.0).



Immunohistochemical analysis of paraffin-embedded human stomach cancer tissue slide using 15052-1-AP (SMOX antibody) at dilution of 1:200 (under 10x lens). Heat mediated antigen retrieval with Tris-EDTA buffer (pH 9.0).



Immunohistochemical analysis of paraffin-embedded human stomach cancer tissue slide using 15052-1-AP (SMOX antibody) at dilution of 1:200 (under 40x lens). Heat mediated antigen retrieval with Tris-EDTA buffer (pH 9.0).