

For Research Use Only

RPS10 Polyclonal antibody

Catalog Number: 14894-1-AP **2 Publications**



Basic Information

Catalog Number: 14894-1-AP	GenBank Accession Number: BC001032	Purification Method: Antigen affinity purification
Size: 150ul , Concentration: 350 µg/ml by Nanodrop and 233 µg/ml by Bradford method using BSA as the standard;	GeneID (NCBI): 6204	Recommended Dilutions: WB 1:500-1:1000 IHC 1:20-1:200
Source: Rabbit	UNIPROT ID: P46783	
Isotype: IgG	Full Name: ribosomal protein S10	
Immunogen Catalog Number: AG6683	Calculated MW: 19 kDa	
	Observed MW: 19 kDa	

Applications

Tested Applications: WB, IHC, ELISA	Positive Controls: WB : Raji cells, IHC : human lymphoma tissue,
Cited Applications: WB	
Species Specificity: human, mouse, rat	
Cited Species: human, mouse	
Note-IHC: suggested antigen retrieval with TE buffer pH 9.0; (*) Alternatively, antigen retrieval may be performed with citrate buffer pH 6.0	

Notable Publications

Author	Pubmed ID	Journal	Application
James P Hewitson	30833344	EMBO Rep	WB
Sipeng Li	34265469	Mol Cell Proteomics	WB

Storage

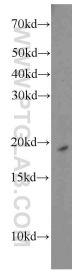
Storage:
Store at -20°C. Stable for one year after shipment.
Storage Buffer:
PBS with 0.02% sodium azide and 50% glycerol pH 7.3.
Aliquoting is unnecessary for -20°C storage

*** 20ul sizes contain 0.1% BSA

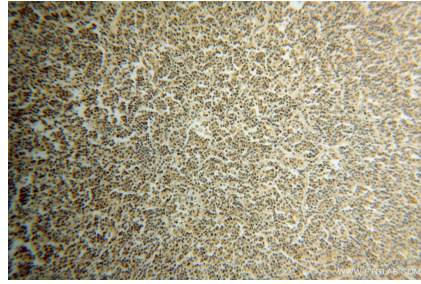
For technical support and original validation data for this product please contact:
T: 1 (888) 4PTGLAB (1-888-478-4522) (toll free in USA), or 1(312) 455-8498 (outside USA) E: proteintech@ptglab.com W: ptglab.com

This product is exclusively available under Proteintech Group brand and is not available to purchase from any other manufacturer.

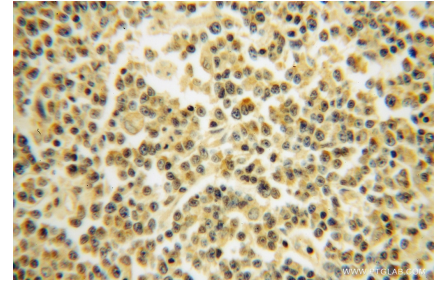
Selected Validation Data



Raji cells were subjected to SDS PAGE followed by western blot with 14894-1-AP (RPS10 antibody) at dilution of 1:1000 incubated at room temperature for 1.5 hours.



Immunohistochemical analysis of paraffin-embedded human lymphoma using 14894-1-AP (RPS10 antibody) at dilution of 1:100 (under 10x lens).



Immunohistochemical analysis of paraffin-embedded human lymphoma using 14894-1-AP (RPS10 antibody) at dilution of 1:100 (under 40x lens).