

For Research Use Only

# SNRPD2 Polyclonal antibody

Catalog Number: 14789-1-AP **1 Publications**



## Basic Information

<b>Catalog Number:</b> 14789-1-AP	<b>GenBank Accession Number:</b> BC000486	<b>Purification Method:</b> Antigen affinity purification
<b>Size:</b> 150ul , Concentration: 367 µg/ml by Bradford method using BSA as the standard;	<b>GeneID (NCBI):</b> 6633	<b>Recommended Dilutions:</b> WB 1:500-1:2400 IHC 1:20-1:200
<b>Source:</b> Rabbit	<b>Full Name:</b> small nuclear ribonucleoprotein D2 polypeptide 16.5kDa	
<b>Isotype:</b> IgG	<b>Calculated MW:</b> 14 kDa	
<b>Immunogen Catalog Number:</b> AG6443	<b>Observed MW:</b> 14-16 kDa	

## Applications

<b>Tested Applications:</b> IHC, WB, ELISA	<b>Positive Controls:</b> WB : A2780 cells, A549 cells, HL-60 cells
<b>Cited Applications:</b> WB	<b>IHC :</b> human skin tissue, human lung cancer tissue, human lung tissue
<b>Species Specificity:</b> human	
<b>Cited Species:</b> human	

**Note-IHC: suggested antigen retrieval with TE buffer pH 9.0; (\*) Alternatively, antigen retrieval may be performed with citrate buffer pH 6.0**

## Background Information

Systemic lupus erythematosus is characterized by antibodies to a variety of intracellular self-antigens, such as dsDNA and Sm, and these serve as hallmarks in the diagnosis of systemic autoimmune diseases. SNRPD2 is one of Sm protein, and is required for pre-mRNA splicing, snRNP biogenesis.

## Notable Publications

Author	Pubmed ID	Journal	Application
Sikandar Azam	31107149	RNA Biol	WB

## Storage

**Storage:**  
Store at -20°C. Stable for one year after shipment.  
**Storage Buffer:**  
PBS with 0.02% sodium azide and 50% glycerol pH 7.3.  
Aliquoting is unnecessary for -20°C storage

**\*\*\* 20ul sizes contain 0.1% BSA**

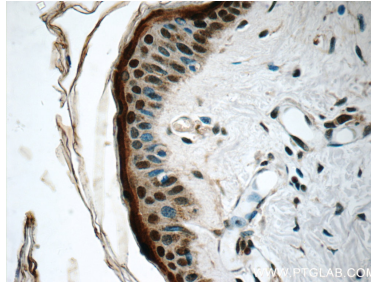
For technical support and original validation data for this product please contact:  
T: 1 (888) 4PTGLAB (1-888-478-4522) (toll free in USA), or 1(312) 455-8498 (outside USA)  
E: proteintech@ptglab.com  
W: ptglab.com

**This product is exclusively available under Proteintech Group brand and is not available to purchase from any other manufacturer.**

## Selected Validation Data



A2780 cells were subjected to SDS PAGE followed by western blot with 14789-1-AP (SNRPD2 antibody) at dilution of 1:500 incubated at room temperature for 1.5 hours.



Immunohistochemical analysis of paraffin-embedded human skin tissue slide using 14789-1-AP (SNRPD2 Antibody) at dilution of 1:50.