

For Research Use Only

# GPR116 Polyclonal antibody

Catalog Number: 14047-1-AP **3 Publications**



## Basic Information

<b>Catalog Number:</b> 14047-1-AP	<b>GenBank Accession Number:</b> BC066121	<b>Purification Method:</b> Antigen affinity purification
<b>Size:</b> 150ul , Concentration: 300 µg/ml by Nanodrop and 253 µg/ml by Bradford method using BSA as the standard;	<b>GeneID (NCBI):</b> 221395	<b>Recommended Dilutions:</b> WB 1:500-1:1000 IHC 1:50-1:500
<b>Source:</b> Rabbit	<b>UNIPROT ID:</b> Q8IZF2	
<b>Isotype:</b> IgG	<b>Full Name:</b> G protein-coupled receptor 116	
<b>Immunogen Catalog Number:</b> AG5214	<b>Calculated MW:</b> 1346 aa, 149 kDa	
	<b>Observed MW:</b> 149 kDa	

## Applications

<b>Tested Applications:</b> WB, IHC, ELISA	<b>Positive Controls:</b> WB : HEK-293 cells, HeLa cells, Y79 cells IHC : human kidney tissue,
<b>Cited Applications:</b> WB, IHC	
<b>Species Specificity:</b> human	
<b>Cited Species:</b> human	

**Note-IHC: suggested antigen retrieval with TE buffer pH 9.0; (\*) Alternatively, antigen retrieval may be performed with citrate buffer pH 6.0**

## Notable Publications

Author	Pubmed ID	Journal	Application
Li Yang	28624786	Oncotarget	WB,IHC
Tian Zheng	35049225	Medicine (Baltimore)	IHC
Ginny Xiaohu Li	38703764	Cell Rep Med	IHC

## Storage

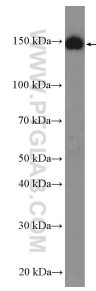
**Storage:**  
Store at -20°C. Stable for one year after shipment.  
**Storage Buffer:**  
PBS with 0.02% sodium azide and 50% glycerol pH 7.3.  
Aliquoting is unnecessary for -20°C storage

\*\*\* 20ul sizes contain 0.1% BSA

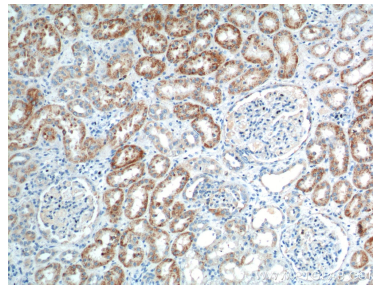
For technical support and original validation data for this product please contact:  
T: 1 (888) 4PTGLAB (1-888-478-4522) (toll free in USA), or 1(312) 455-8498 (outside USA)  
E: proteintech@ptglab.com  
W: ptglab.com

This product is exclusively available under Proteintech Group brand and is not available to purchase from any other manufacturer.

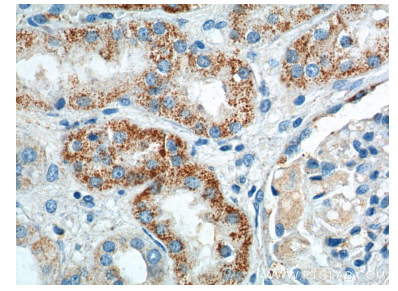
## Selected Validation Data



HEK-293 cells were subjected to SDS PAGE followed by western blot with 14047-1-AP (GPR116 Antibody) at dilution of 1:600 incubated at 4 degree celsius over night.



Immunohistochemical analysis of paraffin-embedded human kidney tissue slide using 14047-1-AP (GPR116 Antibody) at dilution of 1:100 (under 10x lens).



Immunohistochemical analysis of paraffin-embedded human kidney tissue slide using 14047-1-AP (GPR116 Antibody) at dilution of 1:100 (under 40x lens).