

For Research Use Only

# CYP2W1 Polyclonal antibody

Catalog Number: 12904-1-AP

Featured Product

1 Publications



## Basic Information

**Catalog Number:**

12904-1-AP

**Size:**

150ul , Concentration: 133 µg/ml by Bradford method using BSA as the standard;

**Source:**

Rabbit

**Isotype:**

IgG

**Immunogen Catalog Number:**

AG3803

**GenBank Accession Number:**

BC025761

**GeneID (NCBI):**

54905

**UNIPROT ID:**

Q8TAV3

**Full Name:**

cytochrome P450, family 2, subfamily W, polypeptide 1

**Calculated MW:**

54 kDa

**Observed MW:**

45-54 kDa

**Purification Method:**

Antigen affinity purification

**Recommended Dilutions:**

WB 1:500-1:2000

## Applications

**Tested Applications:**

WB, ELISA

**Cited Applications:**

WB

**Species Specificity:**

human, mouse, rat

**Cited Species:**

human

**Positive Controls:**

WB : HEK-293 cells, HepG2 cells, NIH/3T3 cells

## Background Information

Cytochrome P450s have been proposed to be of importance both in carcinogenesis, by activating precarcinogens, and as determinants of cancer chemotherapy, where they participate in activation or inactivation of anti-cancer drugs. CYP2W1 is exclusively expressed in transformed tissue in the adult human, mainly in colon tumors. It is a potential drug target in cancer therapy. CYP2W1 has a molecular weight of 52-54 kDa, and 30/45 kDa of potential isoforms.

## Notable Publications

Author	Pubmed ID	Journal	Application
Hanna Szaefer	31561186	Pharmacol Rep	WB

## Storage

**Storage:**

Store at -20°C. Stable for one year after shipment.

**Storage Buffer:**

PBS with 0.02% sodium azide and 50% glycerol pH 7.3.

Aliquoting is unnecessary for -20°C storage

\*\*\* 20ul sizes contain 0.1% BSA

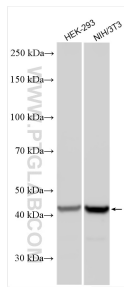
For technical support and original validation data for this product please contact:

T: 1 (888) 4PTGLAB (1-888-478-4522) (toll free in USA), or 1(312) 455-8498 (outside USA)

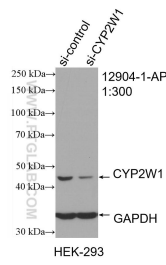
E: proteintech@ptglab.com  
W: ptglab.com

This product is exclusively available under Proteintech Group brand and is not available to purchase from any other manufacturer.

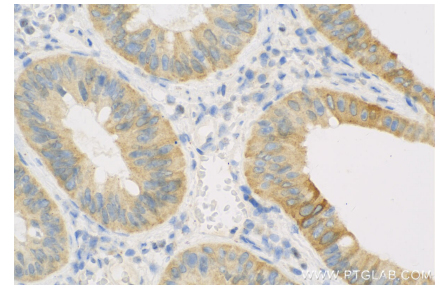
## Selected Validation Data



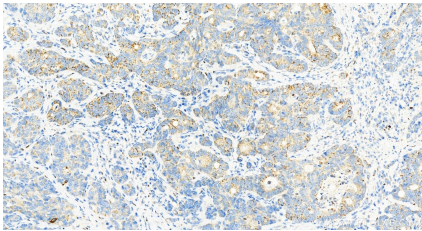
Various lysates were subjected to SDS PAGE followed by western blot with 12904-1-AP (CYP2W1 antibody) at dilution of 1:1000 incubated at room temperature for 1.5 hours.



WB result of CYP2W1 antibody (12904-1-AP; 1:300; incubated at room temperature for 1.5 hours) with sh-Control and sh-CYP2W1 transfected HEK-293 cells.



Immunohistochemical analysis of paraffin-embedded Human Colon cancer tissue slide using 12904-1-AP (CYP2W1 antibody) at dilution of 1:200 (under 40x lens). Heat mediated antigen retrieval with Tris-EDTA buffer (pH 9.0).



Immunohistochemical analysis of paraffin-embedded stomach cancer slide using 12904-1-AP (CYP2W1 antibody) at dilution of 1:200 (under 20x lens). Heat mediated antigen retrieval with Tris-EDTA buffer (pH 9.0).