

For Research Use Only

POF1B Polyclonal antibody

Catalog Number:11398-1-AP



Basic Information

Catalog Number:

11398-1-AP

Size:

150ul , Concentration: 300 ug/ml by Nanodrop and 193 ug/ml by Bradford method using BSA as the standard;

Source:

Rabbit

Isotype:

IgG

Immunogen Catalog Number:

AG1945

GenBank Accession Number:

BC017500

GeneID (NCBI):

79983

UNIPROT ID:

Q8WVV4

Full Name:

premature ovarian failure, 1B

Calculated MW:

595 aa, 69 kDa

Observed MW:

69 kDa

Purification Method:

Antigen affinity purification

Recommended Dilutions:

WB 1:1000-1:8000

IF/ICC 1:50-1:500

Applications

Tested Applications:

WB, IF/ICC, ELISA

Species Specificity:

human, mouse, rat

Positive Controls:

WB : A549 cells, mouse colon tissue

IF/ICC : MCF-7 cells,

Background Information

POF1B plays a key role in the organization of epithelial monolayers by regulating the actin cytoskeleton. POF1B is a candidate gene for premature ovarian failure (POF); it is mainly expressed in polarised epithelial tissues.

Storage

Storage:

Store at -20°C. Stable for one year after shipment.

Storage Buffer:

PBS with 0.02% sodium azide and 50% glycerol pH 7.3.

Aliquoting is unnecessary for -20°C storage

***** 20ul sizes contain 0.1% BSA**

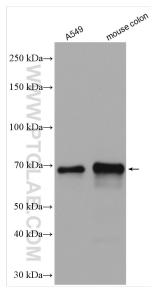
For technical support and original validation data for this product please contact:

T: 1 (888) 4PTGLAB (1-888-478-4522) (toll free in USA), or 1(312) 455-8498 (outside USA)

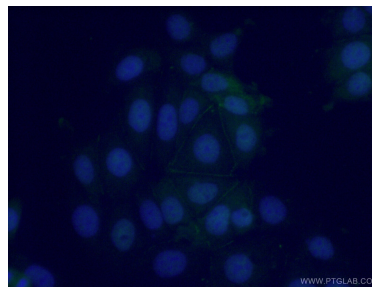
E: proteintech@ptglab.com
W: ptglab.com

This product is exclusively available under Proteintech Group brand and is not available to purchase from any other manufacturer.

Selected Validation Data



Various lysates were subjected to SDS PAGE followed by western blot with 11398-1-AP (POF1B antibody) at dilution of 1:4000 incubated at room temperature for 1.5 hours.



Immunofluorescent analysis of (-20°C Ethanol) fixed MCF-7 cells using 11398-1-AP (POF1B antibody) at dilution of 1:50 and Alexa Fluor 488-conjugated AffiniPure Goat Anti-Rabbit IgG(H+L).