

For Research Use Only

# Fc Epsilon RI Alpha Polyclonal antibody



Catalog Number: 10980-1-AP **7 Publications**

## Basic Information

<b>Catalog Number:</b> 10980-1-AP	<b>GenBank Accession Number:</b> BC015195	<b>Purification Method:</b> Antigen affinity purification
<b>Size:</b> 150ul , Concentration: 350 µg/ml by Nanodrop;	<b>GeneID (NCBI):</b> 2205	<b>Recommended Dilutions:</b> WB 1:1000-1:4000
<b>Source:</b> Rabbit	<b>Full Name:</b> Fc fragment of IgE, high affinity I, receptor for; alpha polypeptide	
<b>Isotype:</b> IgG	<b>Calculated MW:</b> 30 kDa	
<b>Immunogen Catalog Number:</b> AG1398	<b>Observed MW:</b> 55-70 kDa	

## Applications

<b>Tested Applications:</b> WB, ELISA	<b>Positive Controls:</b> WB : MC/9 cells, human spleen tissue, RAW 264.7 cells, mouse spleen tissue, rat spleen tissue
<b>Cited Applications:</b> IF, IHC, WB	
<b>Species Specificity:</b> human, mouse, rat	
<b>Cited Species:</b> human, mouse	

## Background Information

Fc fragment of IgE, high affinity I, receptor for, alpha polypeptide, also known as high affinity immunoglobulin epsilon receptor subunit alpha, FCER1A and FCE1A, is a single-pass type I membrane protein which contains 2 immunoglobulin-like domains. FCER1A is a subunit of the IgE receptor, which is composed of one glycosylated alpha (FCER1A), one beta (FCER1B), and two gamma (FCER1G) subunits. The high affinity IgE receptor plays a central role in allergic disease, coupling allergen and mast cells to initiate the inflammatory and immediate hypersensitivity responses that are characteristic of disorders such as hay fever and asthma. The calculated molecular weight of FCER1A is 30 kDa, the 55- to 70-kDa bands detected by this antibody are probably caused by heterogeneous glycosylation (PMID: 11344350; 12671054).

## Notable Publications

Author	Pubmed ID	Journal	Application
Yunsheng Liang	31251950	J Allergy Clin Immunol	WB
Hongmei Zhao	34158869	Theranostics	WB
Chi Geng	35108660	Transl Res	WB

## Storage

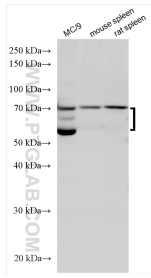
**Storage:**  
Store at -20°C. Stable for one year after shipment.  
**Storage Buffer:**  
PBS with 0.02% sodium azide and 50% glycerol pH 7.3.  
Aliquoting is unnecessary for -20°C storage

\*\*\* 20ul sizes contain 0.1% BSA

For technical support and original validation data for this product please contact:  
T: 1 (888) 4PTGLAB (1-888-478-4522) (toll free in USA), or 1(312) 455-8498 (outside USA)  
E: proteintech@ptglab.com  
W: ptglab.com

This product is exclusively available under Proteintech Group brand and is not available to purchase from any other manufacturer.

## Selected Validation Data



Various lysates were subjected to SDS PAGE followed by western blot with 10980-1-AP (Fc Epsilon RI Alpha antibody) at dilution of 1:2000 incubated at room temperature for 1.5 hours.