

For Research Use Only

KPNA2 Polyclonal antibody

Catalog Number:10819-1-AP

Featured Product

44 Publications



Basic Information

Catalog Number: 10819-1-AP	GenBank Accession Number: BC005978	Purification Method: Antigen affinity purification
Size: 150ul , Concentration: 240 ug/ml by Nanodrop;	GeneID (NCBI): 3838	Recommended Dilutions: WB 1:500-1:3000 IHC 1:20-1:400 IF/ICC 1:50-1:500
Source: Rabbit	UNIPROT ID: P52292	
Isotype: IgG	Full Name: karyopherin alpha 2 (RAG cohort 1, importin alpha 1)	
Immunogen Catalog Number: AG1153	Calculated MW: 57.8 kDa	
	Observed MW: 55-58 kDa	

Applications

Tested Applications: WB, IHC, IF/ICC, ELISA	Positive Controls: WB : HepG2 cells, Jurkat cells, Raji cells IHC : human colon cancer tissue, IF/ICC : HepG2 cells,
Cited Applications: WB, IHC, IF, IP, CoIP, ChIP	
Species Specificity: human, mouse, rat	
Cited Species: human, mouse, pig	

Note-IHC: suggested antigen retrieval with TE buffer pH 9.0; (*) Alternatively, antigen retrieval may be performed with citrate buffer pH 6.0

Background Information

KPNA2 (karyopherin $\alpha 2$) is a nuclear import factor involved in the nucleocytoplasmic transport system. It is functionally involved in the tumor progression and is elevated in multiple cancers. KPNA2 expression may be a useful prognostic biomarker to monitor cancer prognosis.

Notable Publications

Author	Pubmed ID	Journal	Application
Yi-Chao Liang	34508688	Am J Pathol	WB
Rui Shi	31487736	Gynecol Obstet Invest	WB
Hai-Ting Liu	34608273	Cell Death Differ	WB, IP

Storage

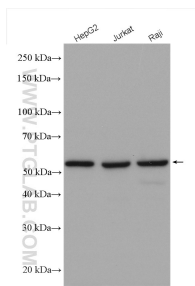
Storage:
Store at -20°C. Stable for one year after shipment.
Storage Buffer:
PBS with 0.02% sodium azide and 50% glycerol pH 7.3.
Aliquoting is unnecessary for -20°C storage

*** 20ul sizes contain 0.1% BSA

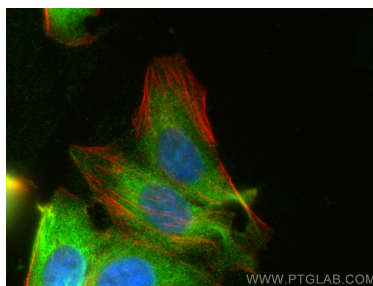
For technical support and original validation data for this product please contact:
T: 1 (888) 4PTGLAB (1-888-478-4522) (toll free in USA), or 1(312) 455-8498 (outside USA)
E: proteintech@ptglab.com
W: ptglab.com

This product is exclusively available under Proteintech Group brand and is not available to purchase from any other manufacturer.

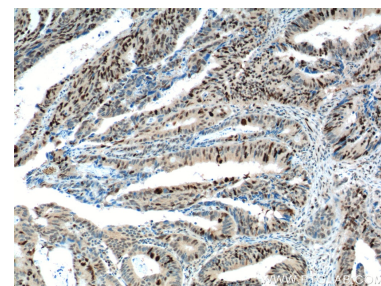
Selected Validation Data



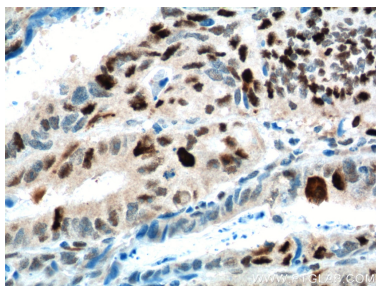
Various lysates were subjected to SDS PAGE followed by western blot with 10819-1-AP (KPNA2 antibody) at dilution of 1:1500 incubated at room temperature for 1.5 hours.



Immunofluorescent analysis of (4% PFA) fixed HepG2 cells using KPNA2 antibody (10819-1-AP) at dilution of 1:200 and CoraLite®488-Conjugated Goat Anti-Rabbit IgG(H+L), CL594-phalloidin (red).



Immunohistochemical analysis of paraffin-embedded human colon cancer tissue slide using 10819-1-AP (KPNA2 Antibody) at dilution of 1:200 (under 10x lens). Heat mediated antigen retrieval with Tris-EDTA buffer (pH 9.0).



Immunohistochemical analysis of paraffin-embedded human colon cancer tissue slide using 10819-1-AP (KPNA2 Antibody) at dilution of 1:200 (under 40x lens). Heat mediated antigen retrieval with Tris-EDTA buffer (pH 9.0).