

For Research Use Only

GYS1 Polyclonal antibody

Catalog Number:10566-1-AP

Featured Product

19 Publications



Basic Information

Catalog Number:

10566-1-AP

Size:

150ul , Concentration: 550 ug/ml by Nanodrop;

Source:

Rabbit

Isotype:

IgG

Immunogen Catalog Number:

AG0857

GenBank Accession Number:

BC007688

GeneID (NCBI):

2997

UNIPROT ID:

P13807

Full Name:

glycogen synthase 1 (muscle)

Calculated MW:

84 kDa

Observed MW:

84 kDa

Purification Method:

Antigen affinity purification

Recommended Dilutions:

WB 1:1000-1:4000

IHC 1:50-1:500

IF/ICC 1:50-1:500

Applications

Tested Applications:

WB, IHC, IF/ICC, ELISA

Cited Applications:

WB, IHC, IF

Species Specificity:

human, mouse, rat

Cited Species:

human, mouse, rat

Note-IHC: suggested antigen retrieval with TE buffer pH 9.0; (*) Alternatively, antigen retrieval may be performed with citrate buffer pH 6.0

Positive Controls:

WB : HeLa cells, K-562 cells, Jurkat cells, mouse skeletal muscle tissue, rat heart tissue, rat skeletal muscle tissue

IHC : human liver tissue, human skeletal muscle tissue, human prostate cancer tissue

IF/ICC : HepG2 cells,

Background Information

GYS1(Glycogen [starch] synthase, muscle) is the the rate limiting enzyme of the insulin-induced glycogenesis, transferring glucose units from UDP-Glc to a glycogen primer. It catalyzes the linear addition of glucose residues to the branching structure of glycogen, providing a convenient store of glucose for times of metabolic need. This protein has 2 isoforms produced by alternative splicing.

Notable Publications

Author	Pubmed ID	Journal	Application
Teresa W-M Fan	36150727	J Immunol	
Zejian Liu	36063868	Metabolism	WB
Miyuki Doi	36353228	Front Endocrinol (Lausanne)	IHC

Storage

Storage:

Store at -20°C. Stable for one year after shipment.

Storage Buffer:

PBS with 0.02% sodium azide and 50% glycerol pH 7.3.

Aliquoting is unnecessary for -20°C storage

*** 20ul sizes contain 0.1% BSA

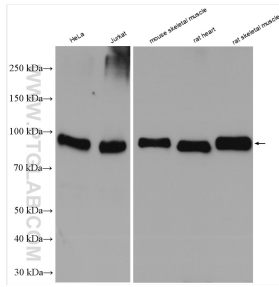
For technical support and original validation data for this product please contact:

T: 1 (888) 4PTGLAB (1-888-478-4522) (toll free in USA), or 1(312) 455-8498 (outside USA)

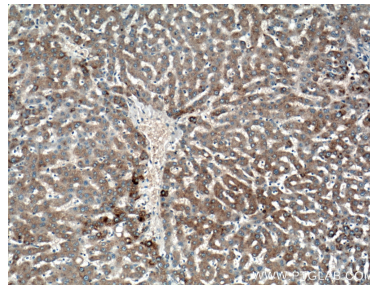
E: proteintech@ptglab.com
W: ptglab.com

This product is exclusively available under Proteintech Group brand and is not available to purchase from any other manufacturer.

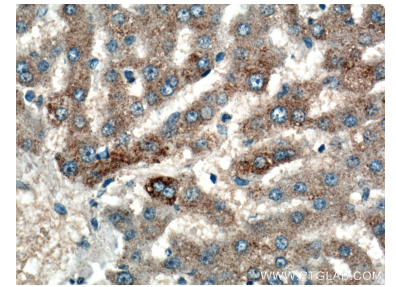
Selected Validation Data



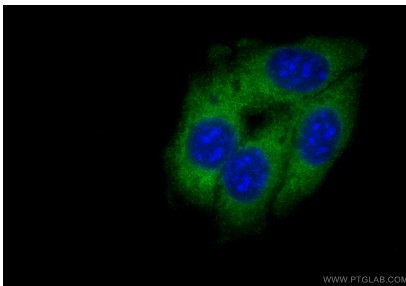
Various lysates were subjected to SDS PAGE followed by western blot with 10566-1-AP (GYS1 antibody) at dilution of 1:2000 incubated at room temperature for 1.5 hours.



Immunohistochemical analysis of paraffin-embedded human liver tissue slide using 10566-1-AP (GYS1 antibody) at dilution of 1:200 (under 10x lens).



Immunohistochemical analysis of paraffin-embedded human liver tissue slide using 10566-1-AP (GYS1 antibody) at dilution of 1:200 (under 40x lens).



Immunofluorescent analysis of (-20°C Ethanol) fixed HepG2 cells using GYS1 antibody (10566-1-AP) at dilution of 1:200 and Multi-rAb CoraLite @ Plus 488-Goat Anti-Rabbit Recombinant Secondary Antibody (H+L) (RGAR002).